

CEMENTATION ENGINEERING CATALOGUE

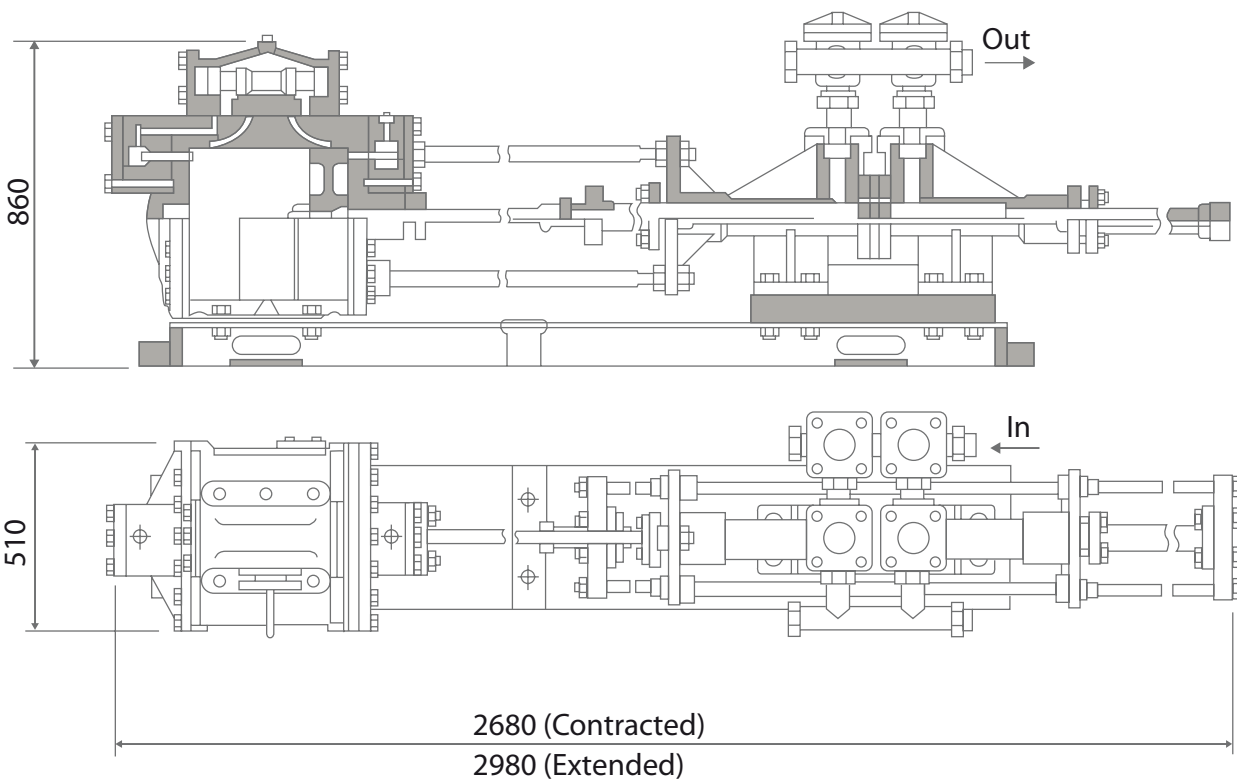
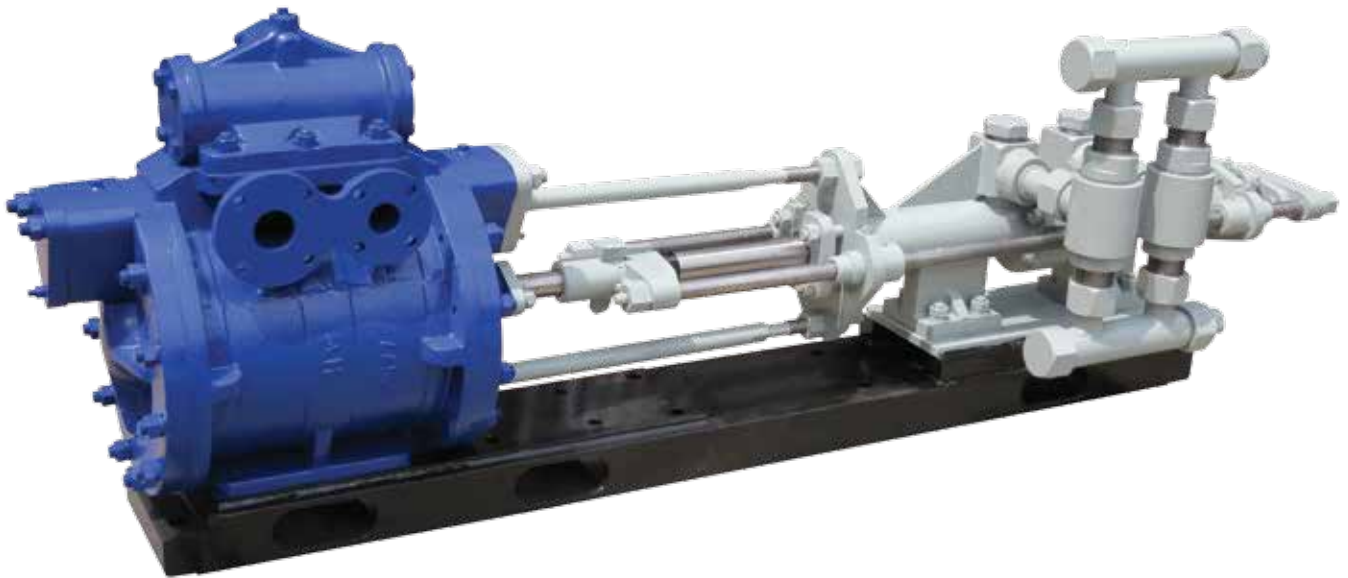
T H E A R T O F H I G H P R E S S U R E C O N T R O L



CEMENTATION ENGINEERING (PTY) LTD

P.O. Box 11735, Randhart, South Africa, 1457
T +27 11 908 3760 F +27 11 908 1268
E ceadmin@premiervalves.com www.premiervalves.com

A Member of the **AVR** Group of Companies



High pressure Grouter (41237 & 41237A)

1. Ram stroke: 300mm
2. Ideal speed: 60 Cycles/min
3. Air inlet pressure: 552 Kpa (80psi)
4. Approx volumetric efficiency: 80%
5. Approx pump weight: 1200kg
6. All pumps supplied to GFC to have 1 spare set of hardened fx rings attached to pump prior to shipping.

RAM size Dia Ø		Displacement/ Cycle	Displacement/ Min		Actual displacement/ Min	Stall/Grout Pressure
mm	Inches	Litres	Litres	Cubic inches	Litres	Mpa
31.75	1 1/4"	0.475	28.5	1379	22.80	69
38.1	1 1/2"	0.684	41.04	2504	32.83	48
50.8	2"	1.216	72.97	4453	58.38	27
63.5	2 1/2"	1.900	114	6957	91.20	17
76.2	3	2.736	164.17	10018	131.34	12



CEMENTATION ENGINEERING (PTY) LTD

P.O. Box 11735, Randhart, South Africa, 1457
T +27 11 908 3760 **F** +27 11 908 1268
E ceadmin@premiervalves.com www.premiervalves.com

A Member of the **AVR** Group of Companies



Methane safety shut off unit

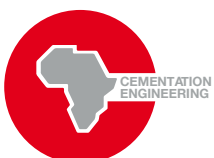
This unit is designed for early detection of methane in reverse circulation diamond core drilling. This early detection enables the operator to contain the methane to the borehole, preventing any potentially dangerous situations.

- A compact water swivel connected to the drill rod (rod end swivel)
- An interconnecting 6.0m high-pressure hose group complete with protective spring guard.
- A second swivel connecting the hose group to the shut off valve (tank end swivel)
- Shut off valve fitted with a non-removable handle
- Separator tanks complete with anchor securing points and stand to accommodate a methonometer above the outlet aperture above the tank
- The unit is pressure tested to 42Mpa. A test certificate is supplied with each unit reflecting the serial numbers of the device. The certificate to be kept on file by the user monitoring and routine pressure testing.



Double drum mixer for mixing grout (41262)

1. Capacity: 275L
2. Driven by 3/4hp, 0.5 kw cylinder radial type compressed air motor
3. Features a double drum fitted with screens for sizing. If the mixer is used for light concrete work
4. The air motor air line is fitted with a sand trap and air line lubricators
5. Mass: 350 Kg
6. Double drum mixer is also available with 3kw electric motors instead of the air motor



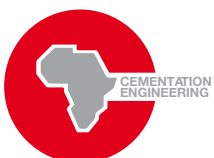
CEMENTATION ENGINEERING (PTY) LTD

P.O. Box 11735, Randhart, South Africa, 1457
T +27 11 908 3760 **F** +27 11 908 1268
E ceadmin@premiervalves.com www.premiervalves.com

A Member of the **AVR** Group of Companies



Item	Description	Application and Features
1&12	Telescopic Pipes	To be inserted into drilled hole and tightened until pipe is secured in the hole
2& 10	Tee Pieces	Can be used on the Telescopic or Drive Pipes
3&9	High Pressure Cock Valves	Used to attach to the Telescopic or drive pipe in the face
4&22	Nipple	Used in conjunction with the Union on the Drive Pipe
5	Union	To be used in front of the Drive Pipe as support for the Safety Clamps
6&15	Wedges	To be inserted into Slot at the Bottom of the Wedge Bolts
7	Drive Pipes	To be inserted into drilled hole and tightened until pipe is secured in the hole
8	Wedge Bolts	Used as anchor for the Safety Clamp after Inserted and Secured in drilled Hole in the Face
11	50 X 25 M&F adaptor	Can be used to change the size to be used with the Cocks
13 & 14	Safety Clamps	Used to Hold Back the Telescopic or Drive Pipe in the Face
16	Gauntlet Hammer	Used to Drive Wedge Bott or Drive Pipe as support for the safety Clamp
17	Pipe Wrench	Used to fit the Unions, to Tee Piece or Cocks to the Drive Pipe or Telescopic Pipes
18	10 dia X 12m chain	Can be used to Secure Safety Clamps to the face - or General Use
19	Minalla robe	Tie anything - General Purpose
20	Safety Box	To be installed at all blasting areas


CEMENTATION ENGINEERING (PTY) LTD

P.O. Box 11735, Randhart, South Africa, 1457
 T +27 11 908 3760 F +27 11 908 1268
 E ceadmin@premiervalves.com www.premiervalves.com

A Member of the **AVR** Group of Companies

High Pressure Cock

The Cementation High pressure cocks are used in the mining industry which requires high pressure and for the sealing off of water by grouting.

This 2.5" range is also used to allow drilling operations to take place through this cock, while controlling the high pressure.

Cementation Engineering also provides a range of cocks up to 4" as required for the use in the mining industry.

¾" X 1" High Pressure Cock (41001)

1. Mass: 2.22kg
2. Bore size: ¾"
3. End Connection Female ¾" BSP or 1" BSP
4. Pressure from 15Mpa to 41Mpa
5. Body and plug are hard chromed and ground
6. Colour: grey or to suit your requirements



1" X 1 ½" High Pressure Cock (41005)

1. Mass: 4.4kg
2. End Connection Female 1 ½" BSP
3. Pressure from 15Mpa to 41Mpa
4. Body and plug are hard chromed and ground
5. Colour: grey or to suit your requirements



¾" and 1" bore X 2" Hub high pressure Hub Cock (41697 & 41713)

1. Mass: ¾" = 3.52kg 1" 6.43kg
2. Bore sizes: ¾" and 1"
3. End connection 2" hub to suit hub clamp
4. Pressure from 15Mpa to 34Mpa
5. Body and plug are hard chromed and ground
6. Colour: grey or to suit your requirements
7. Hand Lever (optional)



CEMENTATION ENGINEERING (PTY) LTD

P.O. Box 11735, Randhart, South Africa, 1457
T +27 11 908 3760 **F** +27 11 908 1268
E ceadmin@premiervalves.com www.premiervalves.com

A Member of the **AVR** Group of Companies



2" Red High pressure Cock (41013)

1. Mass 15.3kg
2. Bore size 55mm through plug and body to allow for drilling of AQ(AX)
3. End connection Female 2" BSP
4. End Connection Male 2 1/2 " BSPT (one end or both)
5. Pressures 34 Mpa
6. Body & plug are hard chromed and ground
7. Colour Red



2" Yellow High Pressure Drilling Cock (41014)

1. Mass: 10.4kg
2. Bore size 46mm through plug and body to allow for drilling operation
3. End Connection Female 2" BSP
4. Pressures: 34 Mpa
5. Body & plug are hard chromed and ground
6. Colour: Yellow



2" White Flanged Cock (41017)

(Mainly used on Slurry lines. Where odd flanges are present)

1. Mass: 25kg
2. Bore size: 42mm
3. End flanges has a taper in the bore to assist with the flow of slurry.
4. Flange on 235mm
5. Undrilled pressure 17 Mpa
6. Drilling PCD and number of holes must be stated on order
7. Body & plug are hard chromed and ground
8. Colour: White

2" Blue Flanged Cock (41718)

(Mainly used on Slurry lines. Where odd flanges are present)

1. Mass: 25kg
2. Bore size: 42mm
3. End flanges has a taper in the bore to assist with the flow of slurry.
4. Flange on 235mm
5. Undrilled pressure 17 Mpa
6. Drilling PCD and number of holes must be stated on order
7. Body & plug are hard chromed and ground
8. Colour: Blue



2 1/2" Grey High pressure Cock (41018)

63mm Bore in body and plug for drilling (BQ)(BX)

1. Mass: 25kg
2. Bore size: 63mm through plug and body to allow for drilling BQ
3. End female connection 3" BSP both ends
4. Pressure: 27 Mpa
5. Body & plug are hard chromed and ground
6. Colour: Grey



3" Grey High pressure Cock (41018)

77mm Bore in body and plug for drilling NQ(NX)

1. Mass: 28kg
2. Bore: 77mm Through plug and body to allow for drilling NQ (NX)
3. End connection female 3" BSP both ends
4. End Connection Male 110X2 Pitch both ends to take 4" BSP adaptor. To take 100 nominal bore sch 160 casing pipe due to pressure rating
5. Body & plug are hard chromed and ground
6. Colour: Grey



CEMENTATION ENGINEERING (PTY) LTD

P.O. Box 11735, Randhart, South Africa, 1457

T +27 11 908 3760 F +27 11 908 1268

E ceadmin@premiervalves.com www.premiervalves.com

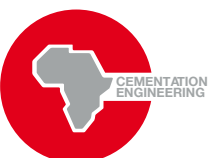
A Member of the **AVR** Group of Companies



CEMENTATION ENGINEERING (PTY) LTD

Manufacturers of High Pressure Mining Products

- Cementation High Pressure Grouting Pump
- Double Drum Grout Mixer
- Cementation High Pressure Cocks (Valves)
- Cementation Telescopic Pipes
- Pilot Safety Dewatering boards
- Cementation Methane Gas Detector Unit
- General Engineering
- General Drilling Products
- General Mining Products



CEMENTATION ENGINEERING (PTY) LTD

P.O. Box 11735, Randhart, South Africa, 1457
T +27 11 908 3760 **F** +27 11 908 1268
E ceadmin@premiervalves.com www.premiervalves.com

A Member of the **AVR** Group of Companies